



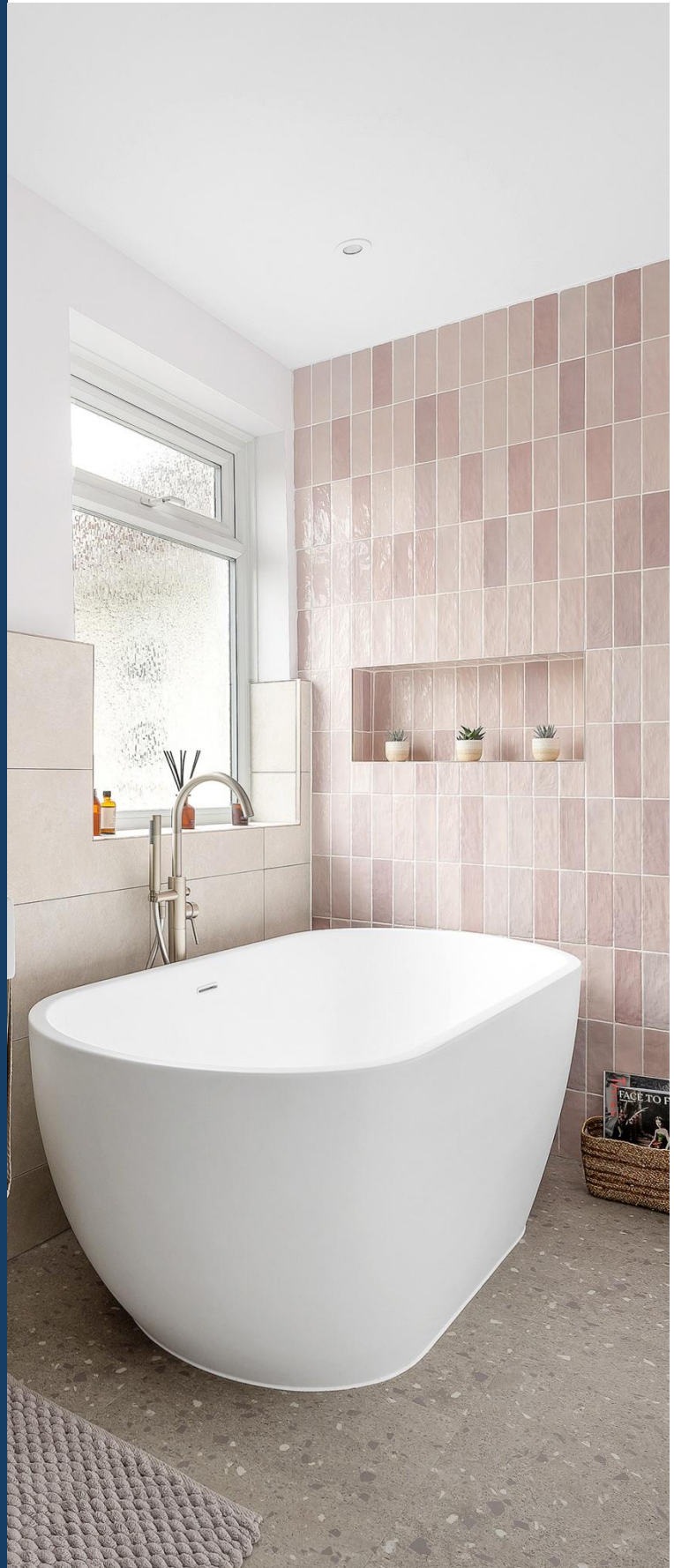
**FRONTLINE
CONSTRUCTION**

Seabrook Drive Bathroom Transformation

CASE STUDY

WEST WICKHAM

2026 COLLECTION





**FRONTLINE
CONSTRUCTION**

CONTENTS

Residential Bathroom Renovation Case Study

- **01** Introduction
- **02** Project Profile
- **03** Before & Design Plans
- **04** Build Process
- **05** Final Reveal
- **06** Client Feedback

01 Introduction

Every project begins with a vision.

This case study explores the journey from initial concept through to completion, highlighting the planning, craftsmanship, and transformation involved in delivering a tailored final result.

Get in touch

 0208 914 7832

 info@frontline-construction.com

 www.frontline-construction.com



FRONTLINE
CONSTRUCTION

02 Project Profile

An introduction to the project, offering context on the work delivered, and the overall journey from start to completion.



LOCATION
West Wickham



PROJECT TYPE
Bathroom Renovation



DURATION
3 weeks



SCOPE OF WORK

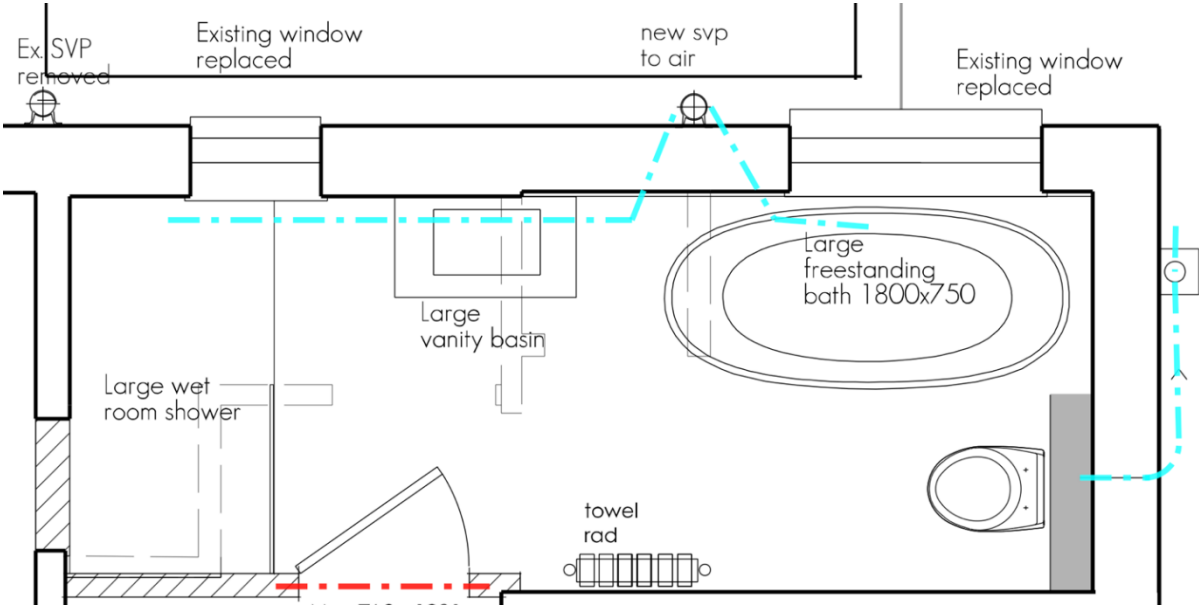
- Full bathroom strip-out
 - Plumbing, drainage, and electrical upgrades
 - Layout alterations and structural works
 - Installation of new fixtures and ventilation
 - Wall and floor finishes, including tiling and waterproofing
 - Decoration and final detailing
-

03 Before & Designs Plans

BEFORE



DESIGN PLAN

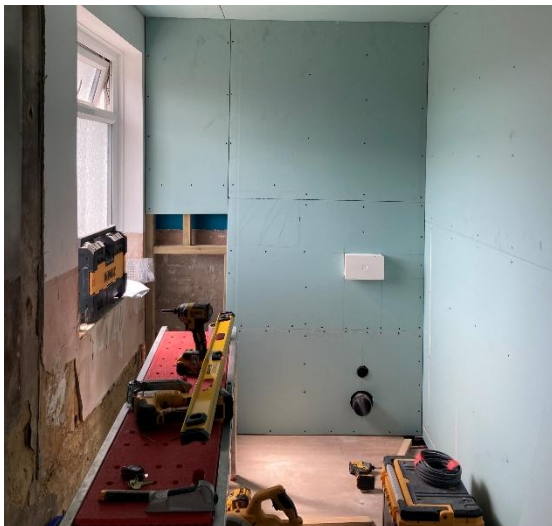


04 Build Process



01 Strip-Out

Existing suite, tiles and finishes removed back to bare structure.



02 First Fix

Plumbing and drainage installation completed.



03 Tiling & Waterproofing

Walls and floors tiled with waterproofing to all wet areas.

05 Final Reveal



06 Client Feedback




We went through a number of iterations, guided ably by Toby before embarking on the work. We are very happy with the final results.

The team who completed the job were excellent and a pleasure to have around.

Very committed and professional.

-Homeowner, West Wickham

Get in touch

 0208 914 7832

 info@frontline-construction.com

 www.frontline-construction.com



**FRONTLINE
CONSTRUCTION**